

Lessons and Hints to Work With Your New Teen Driver



Manual

III. YOUR TEEN DRIVER: ENTRY & PRE-DRIVE

Lessons and Hints to Work With Your New Teen Driver

Part 3

Be Ready, Be Safe, Be Responsible

III. YOUR TEEN DRIVER: ENTRY & PRE-DRIVE

Lessons and Hints to Work With Your New Teen Driver

Part 3



Be Ready, Be Safe, Be Responsible

Lessons and Hints to Work With Your New Teen Driver

- These resources are based on a behind the wheel program that is used by trained driver education teachers.

Purpose :

- to give adults supervising practice driving with a teen driver, an orderly, standard routine.
- To provide objectives and methods similar to those used by in-car driving instructors that may:
 - reduce stressful situations for adult and teen.
 - reduce risk by allowing the teen driver to gradually progress through skill levels and driving environments.
 - The “Be Ready, Be Safe, Be Responsible” approach, is the motto used by the Novice Driver Statewide Program, and is used in the PA Perceptual Driving Curriculum.

Be Ready, Be Safe, Be Responsible

Lessons and Hints to Work With Your New Teen Driver

These resources are based on a behind the wheel program that is used by trained driver education teachers.

Purpose :

to give adults supervising practice driving with a teen driver, an orderly, standard routine.

To provide objectives and methods similar to those used by in-car driving instructors that may:

reduce stressful situations for adult and teen.

reduce risk by allowing the teen driver to gradually progress through skill levels and driving environments.

The “**Be Ready, Be Safe, Be Responsible**” approach, is the motto used by the Novice Driver Statewide Program, and

is used in the PA Perceptual Driving Curriculum.

ENTRY

LOOK

- for small children / animals around or near the car.

Be Ready, Be Safe, Be Responsible

ENTRY

Look

- for small children / animals around or near the car.



ENTRY

ENTER - UNLOCK, ENTER

- ▶ If parked on street-
- Key in hand
- From front - Why?

Be Ready, Be Safe, Be Responsible

ENTER - UNLOCK, ENTER

If parked on street-

Key in hand

From front - Why?



ENTRY

LOOK

- for small children / animals around or near the car.



ENTRY

Look

for small children / animals around or near the car.

ENTRY

ENTER - UNLOCK, ENTER

- ▶ If parked on street-
 - Key in hand
 - From front – Why?

Be Ready, Be Safe, Be Responsible

ENTER - UNLOCK, ENTER

If parked on street-

Key in hand

From front – Why?



PREPARING TO DRIVE

Pre-start Procedures are designed to:

- Help with personal protection against attack, abduction, and carjacking.
- Allow the driver to adjust and check control, safety, and comfort devices prior to moving the vehicle.

Be Ready, Be Safe, Be Responsible

Preparing to Drive

Pre-start Procedures are designed to:

Help with personal protection against attack, abduction, and carjacking.

Allow the driver to adjust and check control, safety, and comfort devices prior to moving the vehicle.

PREPARING TO DRIVE

Some Basics

<https://youtu.be/tEnV2nTtixg>

Preparing to Drive

Some Basics

<https://youtu.be/tEnV2nTtixg>

PRE-START PROCEDURES

1. Lock the Doors
2. Place key in ignition.
3. Adjust in this order
 - seat & head restraint
 - steering wheel, pedals (if pedals are adjustable)
 - mirrors
4. Adjust inside and outside mirrors for maximum field of view.
5. Fasten and adjust safety belt and make sure all passengers buckle up.

Be Ready, Be Safe, Be Responsible

Pre-Start Procedures

1. Lock the Doors
2. Place key in ignition.
3. Adjust in this order
4. seat & head restraint
5. steering wheel, pedals (if pedals are adjustable)
6. mirrors
7. Adjust inside and outside mirrors for maximum field of view.

Fasten and adjust safety belt and make sure all passengers buckle up.



- 1 The Basics: Adjust the Seat
<https://youtu.be/Ct4iugfz-ug>
- 2 The Basics: Adjust the Steering Wheel
<https://youtu.be/eAlbwVE9mG0>

Preparing to Drive

The Basics: Adjust the Seat

<https://youtu.be/Ct4iugfz-ug>

The Basics: Adjust the Steering Wheel

<https://youtu.be/eAlbwVE9mG0>

REARVIEW MIRROR SETTINGS

- The next adjustment that you should make after the seat adjustment should be the **adjusting the rearview** and **side view mirrors**

Be Ready, Be Safe, Be Responsible

Rearview Mirror Settings

The next adjustment that you should make after the seat adjustment should be the **adjusting the rearview** and **side view mirrors**

REARVIEW MIRROR SETTINGS

- Many Drivers may have their driving mirrors adjusted in what is known as...

The Traditional Mirror Setting

Let's take a look at this setting and some of the problems caused by its use.

Be Ready, Be Safe, Be Responsible

Rearview Mirror Settings

Many Drivers may have their driving mirrors adjusted in what is known as...

The Traditional Mirror Setting

Let's take a look at this setting and some of the problems caused by its use.

REARVIEW MIRROR SETTINGS

- The main problem with mirrors in the traditional setting are the areas known as **BLIND SPOTS**.
- **Blind Spots** are the areas outside of the field of view of the side mirrors.
- **Blind Spots** are dangerous because of your inability to see vehicles in these areas.

Be Ready, Be Safe, Be Responsible

Rearview Mirror Settings

The main problem with mirrors in the traditional setting are the areas known as **BLIND SPOTS**.

Blind Spots are the areas outside of the field of view of the side mirrors.

Blind Spots are dangerous because of your inability to see vehicles in these areas.

MIRROR SETTINGS

3

The Basics: Adjust the Mirrors

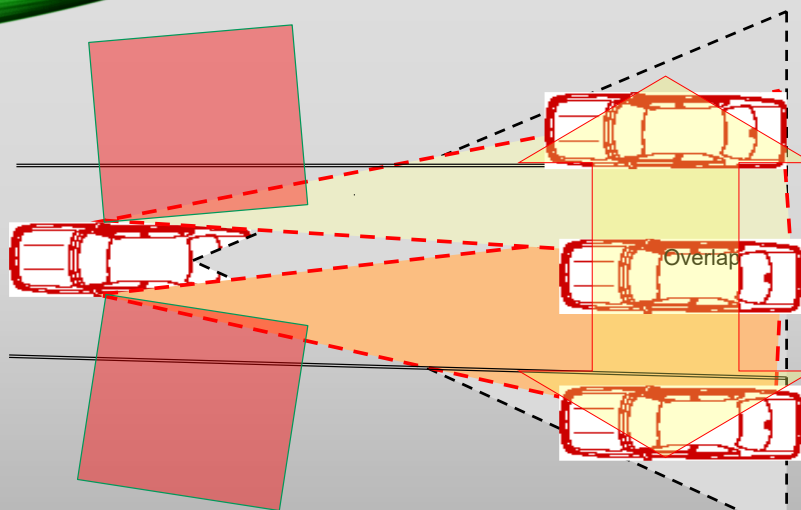
https://youtu.be/fz0HBjt7b_o

Mirror Settings

The Basics: Adjust the Mirrors

https://youtu.be/fz0HBjt7b_o

TRADITIONAL MIRROR SETTINGS



85

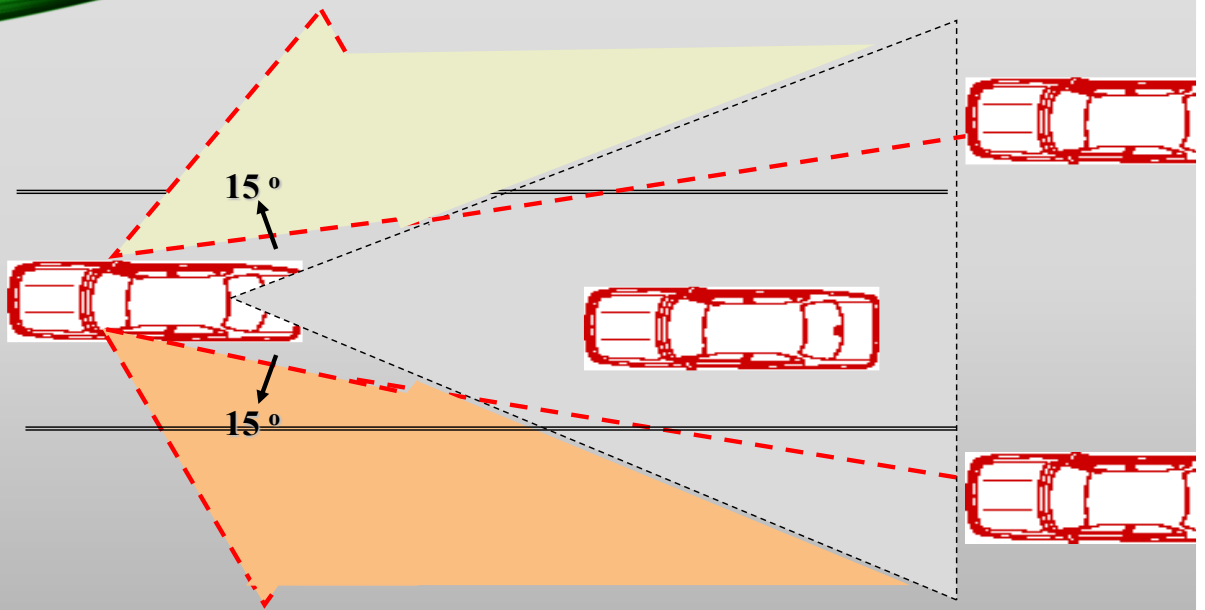
T-2.11

Mirror Settings

One way to combat the problems caused by the traditional mirror setting is to adjust the mirrors to what is known as...

Blind-spot glare reduction

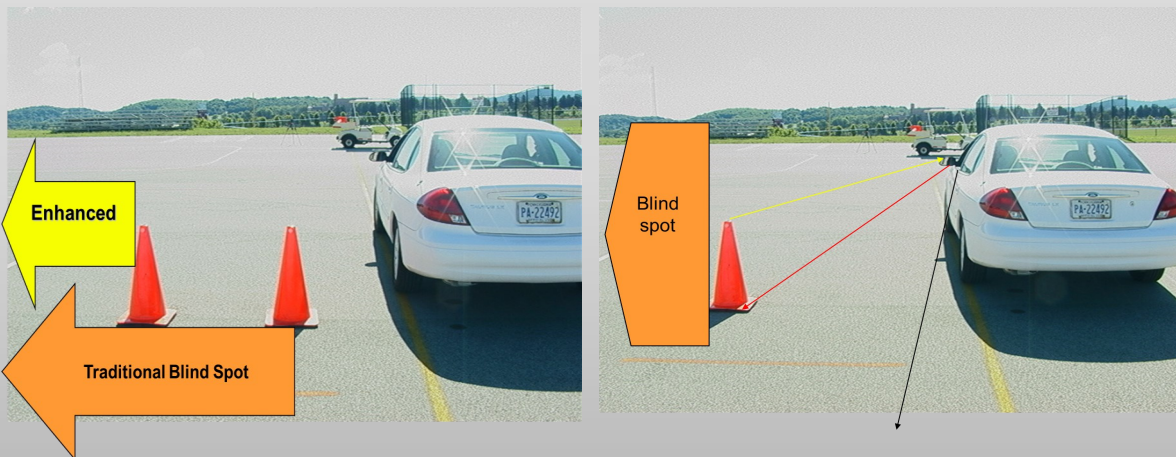
Blind-Spot Glare Reduction Mirror Settings



RS

T-2.12

ENHANCED-(B.S.G.R) SETTING





The Basics: Understanding the Car

4

Have the driver find and operate the devices and identify the dash lights

Practice this as a routine every time.

<https://youtu.be/EuY9h2injks>

The Controls

4.The Basics: Understanding the Car

Have the driver find and operate the devices and identify the dash lights

Practice this as a routine every time.

<https://youtu.be/EuY9h2injks>

START SIMPLE

WORK SLOWLY

REPEAT, REPEAT, REPEAT

Be Ready, Be Safe, Be Responsible

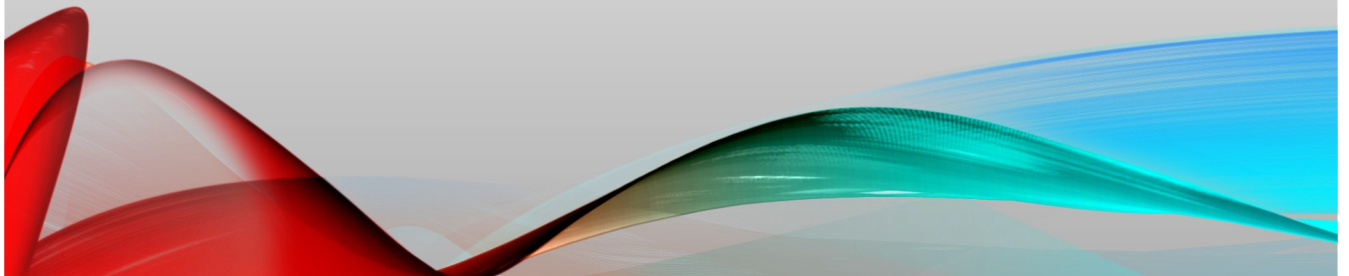
Be Ready, Be Safe, Be Responsible

This series was produced by the Novice Driver Statewide Program and the IUP Institute for Rural Health and Safety through a grant from the PA Highway Safety Office

Videos and Photos: IRHS/NDSP

Other Photos , 3-D models: Creative Commons and MS online resources

You Tube Links-CHOP



NEXT UP: STARTING AND MOVING

