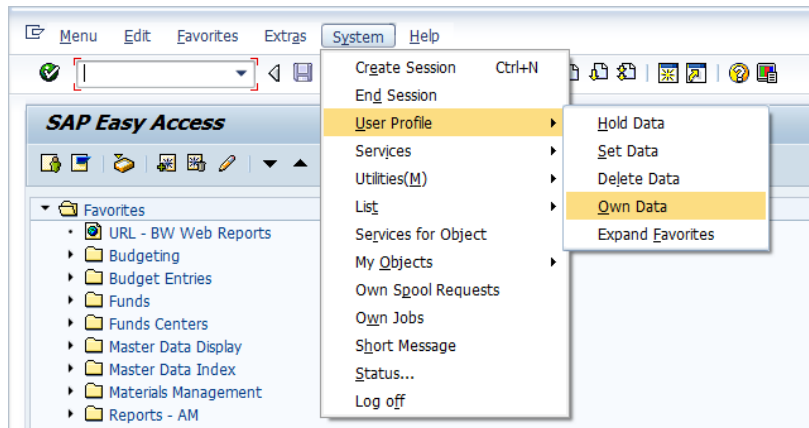


User Parameters for SAP

Adding default parameters will speed up your use of SAP by providing default values for commonly used screens. This document contains a list of common parameters with appropriate defaults for PASSHE and IUP. Some of the parameters relate to fiscal year, so you will need to change these at the appropriate time each year.

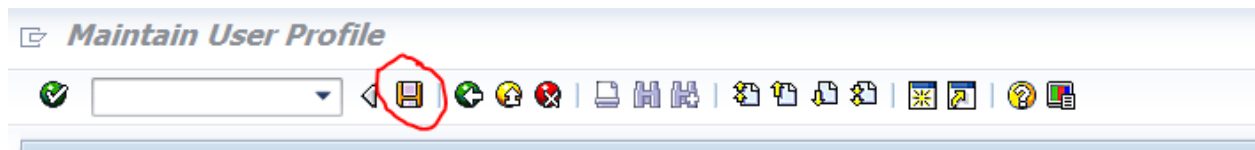
Depending on your level of use, not all of the listed parameters may be needed for your profile; however, it will not hurt to add them all.

In SAP use the following path:




Select the Parameters tab as shown on the next page, and add any Parameter IDs and Parameter Values that are missing from your list.

After adding the missing records click the save icon at the top of the screen.



Maintain User Profile

 Password

User
 Last Changed On Status

Address Defaults Parameters



Parameter			
Parameter ID	Parameter value	Short Description	
OJAHR	2013	Current Fiscal Year	
ASSETMASTER_SETTINGS	0	Personal Settings for Asset Master Data Maintenance	
AVE	SAP01	FI: Entry Template for Payment Advice Items	<input type="checkbox"/>
BP2	0	Budget/planning version	
BUK	SSHE	Company code	
CAC	SSHE	Controlling area	
EKG	400	Purchasing group	
EKO	LOCL	Purchasing organization	
EXP	X	Expert in drilldown reporting (no longer needs all in	
FBA	X1 02	FI: Find documents in document archive if not in d;	
FBZ	DPO	FI: Line Layout Variant for Posting Document - Doc	
FCJ	X	User Options for Cash Journal	
FEA	PR_FUNDS_CENTER	Characteristic name	
FIK	SSHE	FM: FM area	
FO2	X X	Accounting Options / Part 2	
FOP	X X X X	Financial Accounting Options	
FWS	USD	Currency unit	
FZ1	SAP01	FI: Invoice/Credit Memo Fast Entry Line Layout	
FZ2	SAP01	FI: G/L Account Items Fast Entry Line Layout	
FZ5	SAP01	FI: Document Parking Fast Entry (G/L Accts) Line L	
GJ1	2013	Fiscal year (only for reporting)	
GJR	2013	Fiscal year	
GRWE	X XXXXX XEX	Report Writer: Interactive Settings in the Edition	
G_RW_DOCUMENT_TYPE		RW Office Integration: Document Type	
HNA	40	Hierarchy name	

Parameter		
Parameter ID	Parameter value	Short Description
KAR	032	Class type
KME	SAP01	FI Account Assignment Model: Screen Template V:
LLV	DCD	FI: Display or Change Document Line Variant
MOL	10	Personnel Country Grouping
PDB	000000000001	Profile for logical database PSJ
PFL	000000000001	Project information system profile
PRO_02	1	Project Management: Information Fields Shown
PRO_09	333 37	Project Administration: Position Tree Display
PRO_10	73 26	Project Administration: Position Editor
SCL	X	Upper and lower case in source code: 'X' = lower,
SCMAPROFILE	0-SAP-DEMO	Schedule Manager: Profile
SCMA_WIDTH	432	Width of The Task List in The Schedule Manager
SP01_WARN	0000000500	Threshold Value for Number of Lines in Display
WLC	X X XX X 00000	Workflow: User-specific settings
WRK	40	Plant