
2011 | master plan revisions

2011 REVISIONS TO THE MASTER PLAN

As part of an ongoing maintenance agreement with Indiana University of Pennsylvania (IUP), JJR has prepared a series of revisions to the 2010 Long Range Campus Facilities Master Plan based on recent developments during the 2011 calendar year. The intent of these revisions is to ensure that the Long Range Plan becomes a living document that is updated on an annual basis.

The Council of Trustees (COT) at IUP accepted and approved the total concept of the Long Range Campus Facilities Master Plan in December, 2010. Following recommendations established by the 0-5year phasing plan, a Food Service Master Plan was prepared and presented to the COT in September 2011.

Several of the major revisions to the 2010 Long Range Campus Facilities Master Plan revolves around incorporation of the Food Service Master Plan into the Long Range Campus Facilities Master Plan, and making the necessary revisions to the Long Range Plan and phasing strategy.

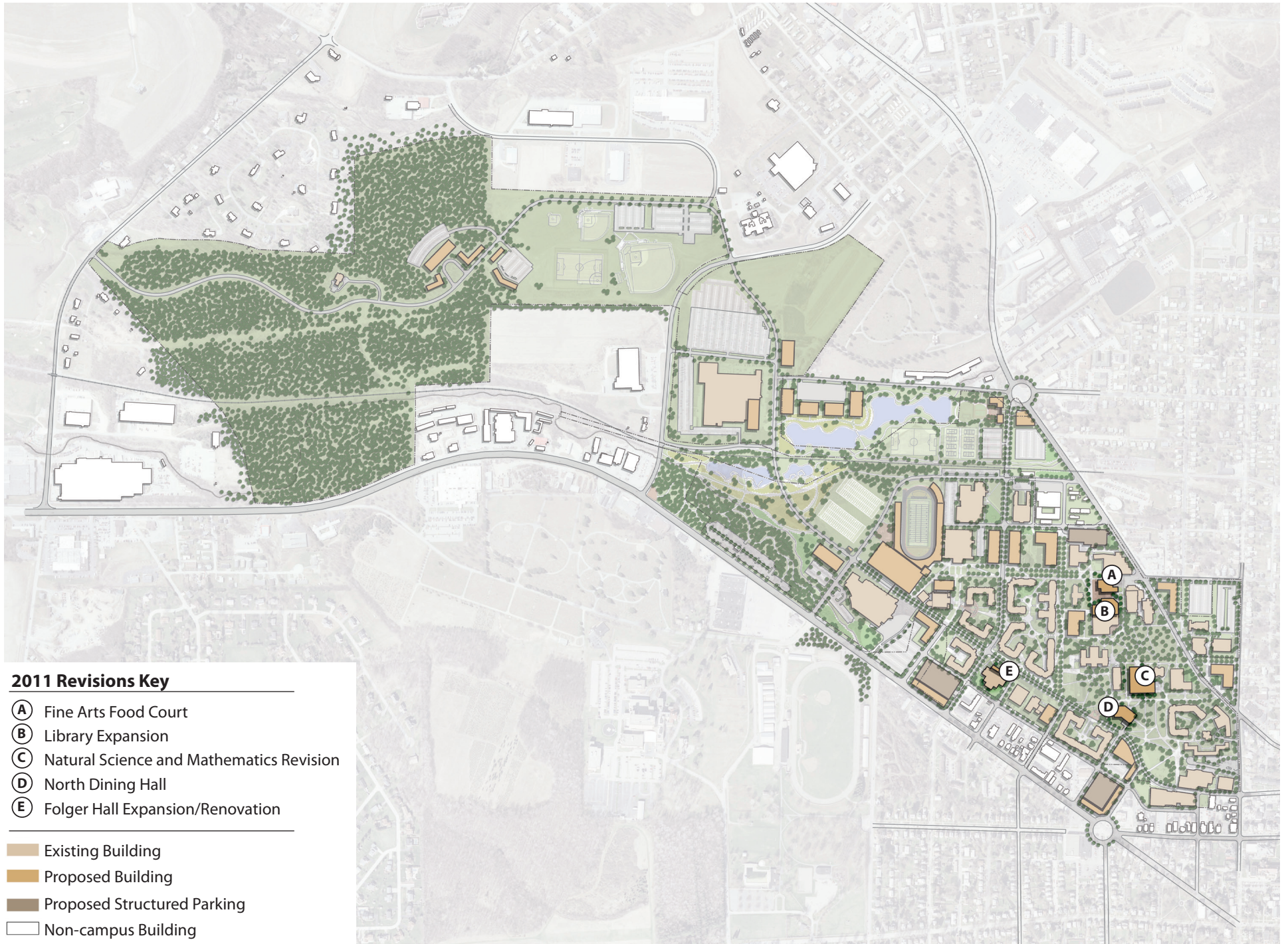
Additional revisions to the 2010 Long Range Plan include:

- Adjustment to the proposed Natural Science and Mathematics building footprint
- The demolition of the Keith Hall as part of the Dining Hall Master Plan
- Construction of a new full service dining facility (North Dining Hall) on the site of the demolished Keith Hall
- Construction of a food retail center (Fine Art's Food Court) in the open site west of the Stabley Library along 11th Street

- Renovation of Folger Food Court building into a full service dining facility
- Demolition of Foster Dining Hall

The 2010 Long Range Campus Facilities Master Plan included emphasis on phasing for specific 0-5 year, 6-10 year, 11+ year time horizons, and a financial plan for guiding implementation. Embedded in the 2011 revisions is an updated understanding of cost implications for the revisions as noted on the following pages.

2011 revisions to the 2010 Long Range Plan are documented in the plan drawing on the right, and are labeled as necessary.



2011 Revisions Key

- (A) Fine Arts Food Court
- (B) Library Expansion
- (C) Natural Science and Mathematics Revision
- (D) North Dining Hall
- (E) Folger Hall Expansion/Renovation

- Existing Building
- Proposed Building
- Proposed Structured Parking
- Non-campus Building

2011 Master Plan Revisions



A VISION FOR THE FUTURE

With inclusion of the 2011 revisions to the master plan, the vision still provides a solid framework from which IUP can continue to attract and retain top students, faculty, and staff.

The specific elements revised for 2011 are in-line with strategic goals for the campus established early in the planning process with consensus from various master plan committees.

2011 revisions to the 2010 Long Range Plan are documented in the axonometric drawing on the right, and are labeled as necessary.

2011 Revisions Key

- A** Fine Arts Food Court
- B** Library Expansion
- C** Natural Science and Mathematics Revision
- D** North Dining Hall
- E** Folger Hall Expansion/Renovation





0-5 YEAR PHASING

IUP's strategic goals and over arching planning principles have been scrutinized and embedded in prudent physical planning recommendations at each implementation phase. Succinct priorities for the 0-5 year plan horizon are rooted in the Pennsylvania State System of Higher Education (PASSHE) 5-year capital improvement and priority spending plan for IUP.

Specific revisions to the 2010 Long Range Campus Facilities Master Plan are highlighted and labeled within the 0-5 year phasing (2012-17) diagram and chart on the right.





REVISED 0-5 YEAR PHASING STRATEGY

Project	Year(s)	Est. Cost	Fund*
<i>Planning</i>			
Food Service M.P.	2011-12	\$175,000	Aux
Signage Master Plan	2011-12	\$70,000	UC
Traffic Studies at Grant + 11 th Streets	2012	\$75,000	UC
Arboretum Phase 1	2012-13	\$75,000	Other
Crimson Line Phase I	2012-13	\$10,000	UC, Aux
Non-Traditional Student Housing	2015	\$75,000	Aux
Property Acquisition along Wayne Avenue	2015	Not Available	Other
<i>Building</i>			
New Facility for College of Humanities and Social Sciences	2011-13	\$37,142,000	CC
Hospitality Facility at Kovalchick Complex	2011-13	\$21,142,000	PC
(A) Fine Arts Food Court	2012-14	\$4,913,665	Aux
(B) North Dining Hall	2013-16	\$17,717,955	Aux
(C) Folger Renovation	2013-15	\$12,105,662	Aux
Demo Keith Hall	2014	\$1,962,972	Aux
Demo Foster Dining / interim parking	2016	\$2,203,954	Aux/CC
(D) New Facility for College of Natural Sciences + Mathematics & Renovation of Weyandt / Demo of Leonard	2016-20	\$86,200,000	CC
<i>Site</i>			
Sprowls Fine Arts Courtyard	2011-12	\$300,000	UC
Demo McCarthy Hall + Construct New Parking	2012	\$500,000	Aux
Close Grant Street Between Pratt + 11th	2013	\$50,000	UC
Hoodlebug Trail Ext.	2014-15	\$400,000	Other
Increase Chilled Water Capacity	2015	\$1,800,000	UC