

DEVELOPMENTS

A semi-annual publication of the Department of Student Affairs in
Higher Education for SPS/SAHE alumni and friends

Student Affairs in
Higher Education

Fall 2010
Volume 23 Issue 2



Welcome Class of 2012!



This year the SAHE program welcomed 33 first year students at Orientation in the beginning of September. The Class of 2012 hails from across the region and country representing the states of Pennsylvania, California, Connecticut, Maryland, Massachusetts, New Jersey, New York, North Carolina, South Carolina and Virginia. Students started assistantships as early as the summer, allowing for immersion into challenging and rewarding experiences. Assistantship sites include IUP, Carnegie Mellon, Frostburg, Point Park University, PSU Altoona, PSU Johnstown and St. Vincent College. Examples of assistantship positions include residential life, advising and testing, student life and financial aid. In addition to the experience at their assistantships, students are getting their first experiences in the graduate program through class presentations, papers and discussions. The Class of 2012 is well on its way to developing as professionals in the field of student affairs and is looking forward to the experiences and enjoyment the SAHE program provides. We wish the best of luck to the Class of 2012!

Editor: Megan Stahl (11)
m.e.stahl@iup.edu, 724-357-2107

Advisor: Dr. John Wesley Lowery
jlowery@iup.edu, 724-357-4535

Please let us know what you think about this semester's Developments. Your feedback and suggestions are welcome and greatly appreciated.

SAHE Faculty:
Linda M. Hall, Chair: lmhall@iup.edu
724-357-4656

Holley A. Belch: habelch@iup.edu
724-357-6288

John Wesley Lowery:
jlowery@iup.edu, 724-357-4535

John A. Mueller: jmueller@iup.edu
724-357-4541

Visit us on the web
<http://www.iup.edu/sahe>

Inside...

-Page 2 -

Where Are They Now?

-Page 3-

Chair's Corner

-Page 4-

Faculty Updates

-Page 6-

Call for Nominations

Dr. Belch Promoted

Get Involved! Award

-Page 7-

Discover New Ways to

Use Google Maps

-Page 8-

SAHE Travels Abroad

-Page 10-

Alumni Accomplishments
and Accolades

-Page 11-

Alumni Professional Updates

-Page 12-

Alumni Personal Updates

ASD Update

-Page 13-

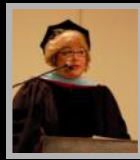
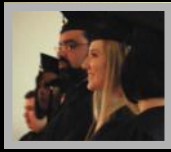
SAHE Student Organizes
"Only Love" Campaign

-Page 14-

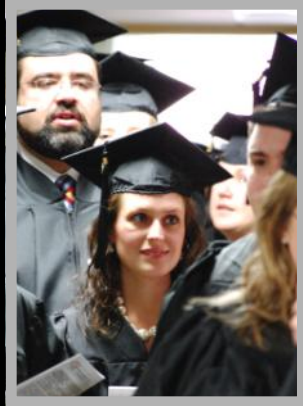
Nominations and Contributions

The Class of 2012 at Orientation





Congratulations Class of 2010!



Students line up for procession.



Craig Pickett addresses the audience at commencement.



Dr. Mueller places the hood during the graduation ceremony.

Where Are They Now?

Hope Abarno	Saint Joseph's College of Maine
Karl Bluemel	Colgate University
Darla Coleman	Community College of Allegheny County
Alexa Ford	Ohio State University
Jared Hammond	Penn State University
Margaret Hammond	Penn State University
Jill Johnson-Hilty	Central Michigan University
Jason Lee	University of Pittsburgh
Matthew Liguori	Lebanon Valley College
Jenna Magnuski	Northeastern University
Kristen Marshall	University of San Francisco
Michael Mullen	Cabrini College
Craig Pickett	University of North Carolina at Greensboro
Daniel Pretz	California University of Pennsylvania
Ian Reynolds	Ramapo University
Cynthia Rose	Rollins College
Jasmine Smalls	Iona College
David Tiscione	Wheaton College—Massachusetts
Joshua Voyles	Stony Brook University
Ariel Weaver	Carnegie Mellon University
Claire Wiegand	William Woods University
Victoria Woodhead	Ithaca College

* graduates who have not reported employment status are not listed.



The Class of 2010 and faculty.

Photographs courtesy of Megan Stahl ('11)





Chair's Corner

Greetings from SAHE!

I am astounded that it is already the midterm. This fall is flying by. Much is happening on campus. Our new Interim President, Dr. David Werner, is truly a breath of fresh air and will be in the interim slot for 2 years. He comes to IUP with excellent administrative and academic experience, and he is a straight shooter who has worked to build trust and open up communication on the campus. The Residential Revival is now complete and the old residence halls which many of you worked in while you were SPS/SAHE students have been replaced with beautiful new halls. The KCAC (Kovalchick Convention and Athletic Complex) is almost complete and provides a great venue for a variety of campus activities. The University's budget poses some serious difficulties for our department, but I am confident that we are a stable and strong program and thankfully, one that is respected on and off campus for a record of strong students, supportive and productive alumni, and excellent faculty.



Our students are working hard—in the classroom and at their assistantship sites. Thirty-two students comprised our 39th graduating class in May and shortly thereafter, our newly enrolled cohort brought together 33 students from 10 states from California to Connecticut. From an enrollment perspective, SAHE is on-target with 59 students enrolled representing 42 different undergraduate institutions. We're also pleased to report that 31 hold assistantships at IUP, and 27 at other colleges in our region. I hope you know that we sincerely appreciate the assistance you provide us in our recruitment efforts. You have referred some very wonderful students to our program, have represented us at grad school fairs and many of you have been the deciding factor in a prospective student's choice to attend IUP. You truly are essential to our success and I hope that you will call or email me about students we should actively recruit. You can also refer prospects to our website (www.iup.edu/sahe). If you would like a SAHE poster or materials to share with interested students, please let me know. We can also be reached through our admissions email address at sahe-admissions@iup.edu.

We know that for many students, obtaining a Graduate Assistantship was another major factor in the decision to attend IUP. We need to identify additional off-campus assistantship sites for next academic year and if your institution is within a commute-able distance, I hope you will consider this means of supporting our program. You remember how important your GA position was in having the opportunity to apply what you learned in the classroom and in making your attendance financially feasible. Please contact me if interested in exploring this possibility.

I've appreciated the notes, emails and phone calls and the opportunity to hear about what is going on in your lives. While I've asked for your help in recruiting, I hope you know that this is a two way street. Let me know how we can be helpful to you too, especially as you seek entry level professionals who are eager to contribute to our profession.

On a personal note, I am having a great fall semester! I moved this summer and am settled in my new place. I soon head for Chicago to visit with family for a long weekend. I'm enjoying our students very much and continue to love teaching. Life is good.

I hope that you are having a great year and that we'll hear from you with news for our next electronic newsletter this Spring.

Warm regards,
Linda M. Hall, Ed.D.
Chair, Associate Professor





Faculty Updates

Dr. Holley Belch

A warm greeting to all of you! As I sit writing this it is 88 degrees in late September but I hear that fall will arrive in the next few days. Despite the summer-like temperatures, evidence of fall exists at every turn -- fall festivals prevail in Western PA, the weekends are full of the sounds of football, pumpkins are emerging, and the leaves are beginning to turn colors.

The cadence of the academic year indicates new students are easing into graduate school while the second year students are beginning the transition to the professional world. Each have their own priorities and focus as they both transition to new stages in life.

The typical spring events occurred since the last edition of the newsletter. It was great to catch up with those attending ACPA in Boston and others who have written or called. Responsibilities to ACPA as Editor of the Books & Media Board have kept me busy. Last spring, along with colleagues at the University of Connecticut, we launched a national study related to working with students with psychiatric disabilities. Results should be emerging soon as we conclude the data analysis phase of the project.

The summer brought heat and humidity, and then more heat and humidity. Did I mention it was hot this summer? I'm sure many of you experienced that as well. Whew! I escaped to the cooler temperatures (sort of) near Stowe, Vermont as I traveled through New England stopping to visit friends in Connecticut and Massachusetts. With visits from friends this summer, day trips around western PA and eastern Ohio, and a major home improvement project the summer simply wasn't long enough. I taught one summer course, The American College Student and finished up a book chapter about working with students with psychiatric disabilities for an upcoming *New Directions for Student Services* book.

What's on your bookshelf? A new book that I'd recommend to all - *The I-Connected Parent* by Barbara Hofer and Abigail Sullivan Moore. It's an alternative way to think about the connection parents have to their students and the potential developmental impact. I think it offers keen insight as to how we can work differently with parents in the developmental process.

Keep me updated on what's happening with you. Remember, on those days when life or work catches up with you, *Peanuts* character Charlie Brown is a strong advocate that naps are a wonderful source of renewal!



Dr. Holley A. Belch

An Update from Dr. Ron Lunardini

Dr. Lunardini reports that he continues to enjoy retired life, with time split between homeowner duties, the beach, golf (handicap is temporarily at 12), travel and university/community service. Travel last year included several trips to Florida, a tour of Costa Rica and numerous trips to the beach townhouse in Kitty Hawk, North Carolina. Service activities include VP of Indiana Borough's Planning Commission, VP of the Sea Dunes Homeowners Association, President of IUP's On Stage Arts and Entertainment Advisory Board, membership in the Act 101 and Friends of White's Woods Advisory Boards and a dissertation committee for a SAHE alum at Duquesne University. He also did some voice-over work for a grant project to train emergency first responders produced by several College of Education faculty. Life remains full but he still very much enjoys hearing from SAHE alums, who can reach him at lunar@auxmail.iup.edu.





Dr. John Wesley Lowery

If the rain and growing cold are any indication, fall has arrived in western Pennsylvania and winter is just around the corner. As an indication of our status as real residents of western Pennsylvania, we invested in a snow blower. Margaret, our daughter, has started first grade this fall and is continuing to play ice hockey which she started last spring.

The fall semester is off to a great start and I am excited to be teaching History of Higher Education in America again, as well as Legal Issues in Student Affairs. We plan to make Legal Issues a regularly offered course in the years to come. The first year students are settling into the SAHE Program and it is clear that many of them chose IUP because they were mentored by our alumni. Many thanks to you all for those referrals.

My professional travel this fall will include trips to NACA Mid-Atlantic Conference in Lancaster, Pennsylvania and to Austin, Texas for the NASPA Student Affairs Law & Policy Conference. I will be presenting on student conduct and legal issues involving student organizations at these conferences. If you will be attending either of these conferences, please be sure to let me know. After a hectic summer of professional travel to North Dakota, Las Vegas, Salt Lake City, and Redlands, California, this somewhat more relaxed travel schedule is welcome.

Please do not hesitate to call me at (724) 357-4535 or e-mail me [jlowery@iup.edu], if you have any questions or I can assist you any way.



Dr. John Wesley Lowery

Dr. John A. Mueller

As I write this newsletter update, the IUP campus is busy preparing for another homecoming weekend. It promises to be a beautiful fall weekend here in western PA. I hope it's a cool and colorful autumn wherever you are. After a productive and relaxing summer, I am energized and ready for a good year with a bright new cohort of SAHE students. This past summer found me on the road a bit more than usual, visiting students at practicum sites in western PA. (One of our students was up in Puget Sound, WA but I just couldn't seem to swing a site visit there!) Back here in Indiana, I'm keeping busy with classes, scholarship, and community work. This fall has me busy with new challenges and responsibilities. One of the more exciting responsibilities is serving as the faculty advisor to the newly formed Secular Student Alliance, a student group committed to educating the IUP campus about atheism, agnosticism, and secular humanism. I'm also proud to once again be supporting and being part of the community that is launching Indiana's 7th annual LGBT film festival. I continue singing with Pittsburgh's Renaissance City choirs as we prepare for our annual holiday concert at the Carnegie Music Hall on December 11. (We've been rehearsing for several weeks now - there's something surreal about singing "We Need a Little Christmas" in the middle of August!) Finally, keep an eye out for the newest (fifth) edition of Student Services (a.k.a. the "green" or "Komives" book). Raechele Pope ('81) and I have a chapter in it. Best wishes to all SAHE alumni and friends; I hope our paths cross at some point over the next year (maybe in Baltimore, MD in March).



Dr. John A. Mueller





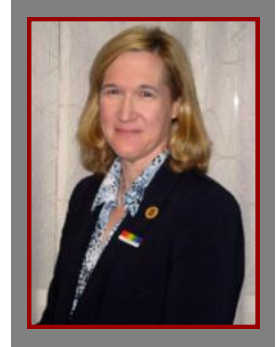
Call for Award Nominations!

Last spring, the SAHE department announced the recipient of the **Ronald Lunardini Distinguished Alumni Award: Dr. Julie Elkins ('85)**. We are now accepting nominations for this year's award. The Ronald Lunardini Distinguished Alumni Award is presented to an alumnus of the SAHE department who has been a student affairs professional for at least five years and whose practice reflects the standards and values of the SAHE department as exemplified by Dr. Lunardini. Details on the nomination criteria and process are available on the SAHE website at www.iup.edu/sahe. Nominations are due by January 31, 2011 and the announcement of the recipient will be made prior to and celebrated at the ACPA convention in Baltimore. Start thinking about your SAHE colleagues and mentors who are deserving of this recognition and please consider nominating one of them.



Left: *Dr. John Mueller presents Dr. Julie Elkins with the Ronald Lunardini Distinguished Alumni Award at ACPA in Boston.*

Right: *Dr. Julie Elkins ('85).*



Dr. Belch Promoted to Full Professor

Dr. Belch began her work at IUP in 1999 in the Student Affairs in Higher Education department (SAHE) and was promoted to associate professor in 2002. She has taught several graduate level courses and is known by students, alumni and her colleagues to be an exceptional teacher. She is regarded by all as having expert knowledge in her field. In 2007-2008, Dr. Belch received a College of Education and Educational Technology Faculty Recognition Award for achieving a high level of teaching excellence.

Dr. Belch has published multiple journal articles, several book chapters, and given numerous national presentations since she's arrived at IUP. Through her research, she has made important contributions to the field of student affairs. She is clearly regarded as a leading scholar as evidenced by her extensive record of publications, presentations, consulting work, grants and positions on editorial boards for premiere journals in the student affairs field. Recently, Dr. Belch has received national recognition for her efforts on working effectively with college students with psychological and psychiatric disabilities.

Her dedicated service and leadership in multiple campus committees as well as her involvement with professional organizations is a record of service above and beyond what is expected. A highly regarded contributor to both IUP and the student affairs profession, Dr. Belch is admired for her ability to sustain her multiple roles with un-ending effort and professionalism. We congratulate her on reaching the professional milestone of promotion to full professor.

The Get Involved! SAHE Student Leadership Award

Congratulations to the Get Involved! Student Leadership Award recipient, Shauna Sergent. This award, presented for the first time, was presented to Shauna at the SAHE Banquet in May. The award recognizes a first year student leader who demonstrates passion and interest in bettering the SAHE Community, their institution and campus, and the larger community. SAHE greatly appreciates Tom and Erin Baker's support and generosity in establishing this award.



Shauna Sergent and Tom Baker ('05).





Discover New Ways to Use Google Maps

Submitted by Warren Hilton ('99)

If you haven't been using Google Maps and Google Earth in your student affairs office, now's the time to get started. Here's how Google Maps and Google Earth can improve student services on your campus:

1. Community service offices. Use Google Maps to provide a visual 'map' of community service opportunities located near campus. This will give students an idea of what type of service they can complete and how close the service opportunity is to where they live. See a great example on Moravian College's community service website at <http://home.moravianedu/public/stusvc/community/map/mapframe.html>.
2. Career services. Use Google Earth to display the places where students have completed internships and alumni are working. Career services offices can give a quick snapshot of the career success and placement of their students and graduates. You'll find an excellent example on Elon College's website at http://www.elon.edu/e-web/career_services/maps.xhtml.
3. Orientation and alumni networking. Take advantage of Google Maps to introduce and connect students and alumni to each other. Using the My Maps feature, they can create an autobiography with place marks of important places (i.e., where they were born, etc.) in their lives. These maps can be submitted to offices that handle orientation and/or alumni affairs. Then they can be shared with the campus community and alumni. Agnes Scott College created biographies of women mathematicians. Mathematicians by using Google Maps. Go to <http://www.agnesscott.edu/lriddle/women/geographic.htm>.
4. Residence life. Draw on Google Maps features to provide directions to a particular residence hall. But take it a step further by using Google Earth to provide a satellite image of the building. Texas A&M does a wonderful job showing off their residential facilities using Google Maps and Google Earth. Go to <http://reslife.tamu.edu/maps/>.
5. Student activities. Conduct fun and interactive scavenger hunts using Google Maps. Students with their computers tuned to Google Maps can locate different landmarks, people and services on and around campus. Create a directional map, and then follow the directions to points included in the hunt. Central Michigan University's recent "Mission Impossible" scavenger hunt featured students working with Google Maps to find locations and people around Mount Pleasant, Mich. You'll find it at <http://www.cm-life.com/2010/04/18/students-duke-it-out-in-campuswide-scavenger-hunt>.

These opportunities offer a unique way to engage students in co-curricular activities. Why not try out at least one? And maybe the next time someone googles "Google Maps university or college," your institution will be at the top of the list.





SAHE Travels Abroad: Two Students' Reflections

A Global Perspective on Student Affairs

Submitted by Jean Wenner ('11)

Through Bowling Green State University's College Student Personnel master's program, I completed a highly enjoyable opportunity studying abroad in the United Kingdom. Although I had visited England while studying in Spain during my 3rd year as an undergraduate student at BGSU, I did not spend an extensive amount of time in the country nor did I learn much about the institutions while I was there. During this tour, two other second year SAHE students and I joined almost 30 other students from student affairs master's programs around the country to tour higher education institutes throughout Scotland and England. Our purpose was to learn about the universities and compare them with universities in the U.S. as well as to learn about the meaning student affairs has to the people of Great Britain.

Through the study tour, I learned about many important aspects about the U.K. system of higher education that I would not have learned through research alone. I was able to see firsthand the minute details that make the universities unique to the U.K. For example, when applying to university, a student interested in applying to one of the Oxbridge universities may only apply to either Cambridge University or Oxford University through the University and College Admissions System (UCAS) but not to both. The motive behind this arrangement is that a student will know whether they are an Oxford student or a Cambridge student. The vice president of the Cambridge student union described the arrangement as a way of thinking amongst students. The universities believe that each student would know that they belong at either the one university or the other. University life in the United Kingdom is quite important for student identity as well as an important rite of passage for young people of Britain.

Although this adventure lasted only 2 weeks, I believe that I have a much better understanding of the higher education system in the U.K. and I now have the desire to learn about other systems of higher education throughout the world. I highly recommend that first year SAHE students look into this opportunity to broaden their global awareness in higher education.



Students and tourists punting through Cambridge University.

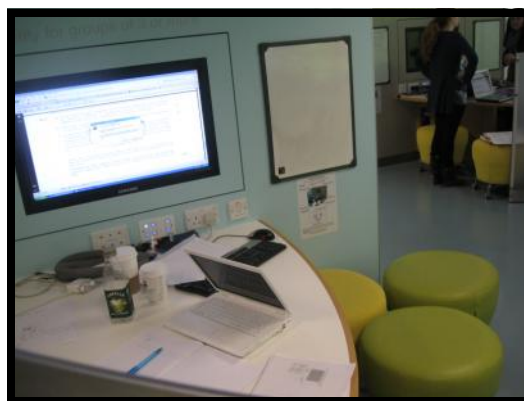


City of York, ancient city street called the Shambles adjacent to St. John University.



Left: A tour guide at the University of St. Andrew wears a red cape down the side of her arm to denote her academic status.

Right: Group study pods at the University of Edinburgh.





A Comparative Outlook

Submitted by Shauna Sergent ('11)



Ashley Spencer, Shauna Sergent and Jean Wenner pose for a picture in the Glendalough countryside in Ireland.

After studying abroad twice during my undergraduate experience, I was excited to continue my international education through a Comparative Higher Education program offered in the UK. This experience provided the opportunity to travel to nine different institutions throughout Scotland and England. It was interesting to see how different institutions operated based on their diverse structures. We visited a variety of institutions including a few “ancient universities” (a name to describe seven of the oldest English universities still in operation today), American universities operating abroad, and newer, more modern institutions. Each model demonstrated different strengths depending on what type of experiences students were looking for during their higher education. One of the most unique differences between the US and UK is there is a single organization in charge of handling all student applications in the UK. The Universities and Colleges Admissions Services (UCAS) aims to streamline the process between applicants and colleges by acting as a central application agency.

Through this study abroad program, I was able to spend 14 days in the UK with 27 other student affairs graduate students from various colleges and universities throughout the US. It was a great opportunity to interact with everyone to determine the similarities and differences between our programs. It was inspiring to be with so many young professionals and to discuss their reactions to the same experience abroad. I thoroughly enjoyed learning about the higher education system in the UK, having the opportunity to tour various institution types, and meet so many professionals abroad. From this experience, I have a better understanding of the student affairs field in general and a more extensive view of international education. I look forward to using this knowledge as a student affairs professional in the near future! I encourage all the first year students to look into the different study abroad opportunities available for higher education majors. It is an eye opening experience that you would not want to miss!



Ashley Spencer, Jean Wenner and Shauna Sergent take a rest on wall surrounding the city of York, near St. John University.

Right: Alnwick Castle where St. Cloud State University hosts study abroad students.





Alumni Accomplishments and Accolades

- Katie Bean ('08)** won the Spark a Life Award in May. This award is given to a George Washington University staff member who has “created momentum on campus and sparked life into the student body.”
- Jillian Bolt ('09)** and **Kate (Stahl) Kinsinger ('94)** presented “*Build It and Make Them Come: How and Why an Intrusive Model Works with At-Risk Students*” at the National Academic Advising Association (NACADA) Conference in Orlando, Florida in the beginning of October.
- Stacey Brown ('02)** received an MS in Human Resource Management from the University of Maryland, University College in May 2009.
- Faina Bukher ('08)** began teaching her first Introduction to Women’s Studies course at the University of New Hampshire.
- Carrie Egnosak ('05)** conducted a workshop on Academic and Professional Goal Setting at Penn State’s 9th Annual Professional Development Conference on Academic Advising held October 27, 2010.
- Jamie Guilford ('08)** was accepted into Leadership Wilkes-Barre’s (LWB) Class of 2011.
- Warren Hilton ('99)** published an article on using Google Maps in Student Affairs in the September edition of *Student Affairs Today*. The article can also be found on page 7 of Developments.
- Sara (Barnett) Lawer ('08)** was appointed to serve as District 2 Adviser on the Executive Board for the Council for Advancement & Support of Education – Affiliated Student Advancement Programs (CASE-ASAP).
- Dora Elias McAllister ('00)** is pursuing her Ph.D. in Higher Education at the University of Maryland. She is beginning work on her dissertation and has recently begun her assistantship in the New Leadership Alliance for Student Learning and Accountability.
- Michelle (Marchand) Rebholz ('08)** received a Lehigh University Tradition of Excellence Award in Spring 2010, which is annually distributed to individuals whose dedication, imagination, creativity and leadership contribute to the university.
- Al Thiel ('07)**, the Assistant Director of Student Development at Iona College is also now the Director of the Iona College Pipe Band.
- Peter Trentacoste ('00)** was one of 14 international experts invited to speak at the first North American Bedbug Summit in Chicago on the topic of Best Practices for Bedbug Management in College/University Housing.
- Dr. Cherita (Griffin) Weatherspoon ('96)** has published her first book, *Community College Leadership Defined: Identifying, Developing and Assessing the Competencies Necessary for Leadership Success in the 21st Century* which is available on Amazon.

Professional Updates

- Sara Adams ('04)** has been promoted to Associate Director of Career Services at Oberlin College. She remains active as a freelance musician and a member of the Cleveland Orchestra Chorus.
- Sandra Alef ('07)** accepted a position as a Residence Life Coordinator at Rutgers University.
- Dan Amerman ('01)** accepted a new position as Dean of Students at Liberty Preparatory Christian Academy (Liberty Prep), in Mooresville, NC. Liberty Prep is a private, Christian, K-12 University Model School that opened doors this fall in the Lake Norman region of North Carolina (www.libertyprepnc.com).
- Kevin Bailey ('90)** has accepted a position as the Vice President for Student Affairs at the University of West Florida in Pensacola. He will also be teaching courses in the College Student Affairs Master’s Program.
- James Barricelli ('04)** has accepted a position as the Associate Director of Employer Relations for George Washington University School of Business.
- Angela (Cunningham) Bazin ('99)** is currently the Acting Director of Housing at Eastern Connecticut State University.



*Professional Updates Cont'd.*

Sarah Bauer ('03) is the Acting Managing Director of the Leadership, Engagement, Action and Development Program (LEAD) at San Francisco State University.

Krystal Brooks ('07) accepted a position as the Associate Director of Masters Admissions at the Tepper School of Business at Carnegie Mellon University.

Stacey Brown ('02) recently accepted a position at Booz Allen Hamilton as a Senior Consultant with their Human Capital and Learning team.

Ron Delfine ('97) was recently promoted to the position of Director of Heinz College Career Services at Carnegie Mellon University.

Alicia Davin ('03) accepted a position as an Undergraduate Academic Advisor in the School of Arts and Sciences at the University of Pittsburgh.

Kristen Eicholtz ('05) is now the Director of Career Services and Internships at DeSales University.

David Griggs ('95) is a Recruiter at the Community Health Center of Snohomish County.

Christina Hale ('07) started a new position at Mansfield University as the Instructional Counselor to the MAAP and TRiO SSS programs in the Department of Academic Initiatives.

Holly Hippensteel ('96) was promoted to Assistant Dean of Student Affairs at Carnegie Mellon University.

Chad Jurica ('09) accepted a position with Educational Management Corporation, Online Higher Education (OHE) as the Manager of Disability Services for students enrolled in online programs at The Art Institute, South University, and Argosy University.

Dawn Kohn ('05) was promoted to the Director of Student Development at the Art Institute of California-Los Angeles.

Scott Mattingly ('99) has recently been promoted to Director of Academic Support Services and Retention at DeSales University.

Maureen May ('93) is now the Associate Director at Heinz College Career Services at Carnegie Mellon University working with Masters in Arts Management and Entertainment Management students.

Ronika Money ('04) was promoted from Coordinator for Student Services and Involvement to Assistant Director of Student Affairs at Penn State Brandywine.

Ginny Naglic ('05) is currently an English teacher at Chester Upland School District working with 11th graders and assisting urban families with FAFSA, career counseling, and academic mentoring.

Jennifer Pruzinky ('08) accepted a position as an Assistant Director of Admissions at Waynesburg University in Waynesburg, PA.

Amanda Ries ('06) is now the Assistant Director of Residence Life at Seton Hill University.

Brian Root ('06) recently accepted the position of Assistant Director of Housing and Residence Life at the University of Pittsburgh at Greensburg.

Julia Schreck ('09) recently accepted a position as the Assistant Director in the School of Management at Yale University.

Erin E. Schuetz ('09) was named the Coordinator of Transitions Services at Clarion University.

Chrissy Smith ('08) accepted a position as the Assistant Director of Campus Activities and Student Leadership at William Paterson University.

Tracy (Stih) Stockard ('99) is now serving as the Director of College Counseling at Gilmour Academy in Gates Mills, Ohio.

Susan Timko ('91) is now the Associate Director at Heinz College Career Services at Carnegie Mellon University working with Masters students at the School of Information Systems and Management.

Dr. Cherita (Griffin) Weatherspoon ('96) was appointed as the Director of Student Success Programs at Salem Country Community College in Carneys Point, New Jersey.





Personal Updates

James Amato ('07) and Jessica were married on June 17, 2010. Among those in attendance were Nicole Roe ('07) and Katheleen Krohn ('07). They reside in the Greater Pittsburgh area.

Angela (Cunningham) Brazin ('99) and her husband welcomed Abigail Cunningham Bazin on July 22, 2010. Abby joins big brother Keith, 5 and completes their family.

Edward Cruz ('06) married Juliana Ferraz on May 30, 2010. Edward is currently the Assistant Director of Graduate Student and Alumni Programs at the University of Miami.

Jill (Landis) Matolyak ('02) and her husband, Alex welcomed Benjamin Matolyak on June 5, 2010.

Courtney (Stone) O'Connell ('08) was married in May of 2010.

Dan Pretz ('10) and Katy Griepentrog are to be married on November 20, 2010.

Ryan Rearick ('06) and his wife, Emily welcomed their son, Lincoln Gray on June 23, 2010.

Robyn Schultz ('09) purchased her first house in Reading, PA in April 2010.

Megan (Albidrez) Taliaferro ('02) and her husband welcomed their first child, Emma Lucia Albidrez on April 19, 2010.

ASD Update

Submitted by Sam Waltemeyer ('11), VP Public Relations

Greetings Alumni, Current SAHE Students and Friends,

This semester has already been a very productive one for the Associates of Student Development. The year began with the welcoming of our new students at the SAHE Kick-Off. Donald Brennan organized the evening's ice breakers and organized the Cohort Connection mentorship program. Diane Williams and Ashley Fowler organized most of the logistics while a much appreciated Adam Prescott worked the grill.



ASD at Kennywood Park.

ASD's Kate Adams (VP of Programming) has been busy planning a variety of social events to include, trips to PNC Park, board game nights, picnics at Yellow Creek Park and a trip to Reeger's pumpkin farm. Over the summer ASD also hosted a trip to the Kennywood amusement park where new and second year students could meet and have fun before the semester started. Martin Sagendorf (VP of Professional Development) organized an APA writing workshop and hosted SAHE alumni Tom Baker as he spoke to us about networking. Martin has also developed other resources for ASD members to include an organized calendar of upcoming student affairs conferences.

Later in the semester Shauna Sergent (ASD President) will be holding elections to foster new leadership among the SAHE students. ASD will be concluding the semester with the SAHE Thanksgiving dinner and the annual winter holiday party. It is looking to be a very exciting semester!

The outgoing executive board of ASD would like to thank Dr. Mueller for all of his guidance and support.



ASD at Twin Lakes Park.





SAHE Student Organizes “Only Love” Campaign

Submitted by R.C. Stabile ('12)

On October 8, 2010, R.C. Stabile ('12) organized a campaign to combat homophobia on the IUP campus. The campaign was called “Only Love” and featured students posing for photographs all sharing one message: love for all people. The campaign included over 130 students and professionals on campus including a number of SAHE students who decided to commit to speaking only love. The project also featured a banner covered in loving messages for the community. The photographs will be used in a Facebook social campaign, a Youtube video, and a gallery in Suites on Pratt. The photographs will also be used across campus to show IUP that all people are welcome and are loved on our campus.



Photographs courtesy of Courtney Ra and R.C. Stabile ('12).

IUP Homecoming 2010



Photographs courtesy of Megan Stahl ('11)





Nominations and Contributions

Alumni Nominations:

Please email names and addresses of students you would like us to send a SAHE information packet to sah-admissions@iup.edu. Thank you!

Contributions

The **Nancy Newkerk Scholarship** – Awarded to a second-year master’s student whose contributions during the first year of their program demonstrated the greatest promise for the profession of student affairs.

(Acct # 0374)

The **Hadley Outstanding Student** – established to recognize outstanding 2nd year students on the basis of academic performance and professional involvement in the SAHE program. **(Acct #0140)**

The **SAHE Development Fund** – Supports the needs of the SAHE program that are not covered by funds from the University (e.g., student support for professional development activities, research support to students, Outstanding Scholar Award, Outstanding SAHE Alumni award). **(Acct # 4647)**

NCSPF/DEPT/AF10

Name(s): _____ Banner ID (if known): @_____

Address: _____

City: _____ State: _____ Zip Code: _____

Email: _____ Phone: _____

Please accept my gift of \$ _____. (Please specify **Account Number** on your check.)

Or, I would like to pledge \$ _____ and pay my gift in 1 2 3 4 consecutive monthly installments.

Please mail this form along with your check made payable to Foundation for IUP to: Foundation for IUP, 103 Sutton Hall, 1011 South Drive, Indiana, PA 15705-1046 Or, to pay by credit card, please complete the fields below, or visit www.iup.edu/giveagift and enter the Account Number in the “Other” field to designate your gift.

Please charge my Visa MasterCard American Express Discover Card Number: _____

Expiration Date: _____ Signature: _____

The Foundation for IUP is a 501(c)(3) organization; gifts to the Foundation are tax deductible as per IRS regulations. The official registration and financial information of the Foundation for Indiana University of Pennsylvania may be obtained for the Pennsylvania Department of State by calling toll free, within Pennsylvania, 1-800-732-0999. For calls which originate outside of Pennsylvania, the telephone number is 717-783-1720. Registration does not imply endorsement.

